

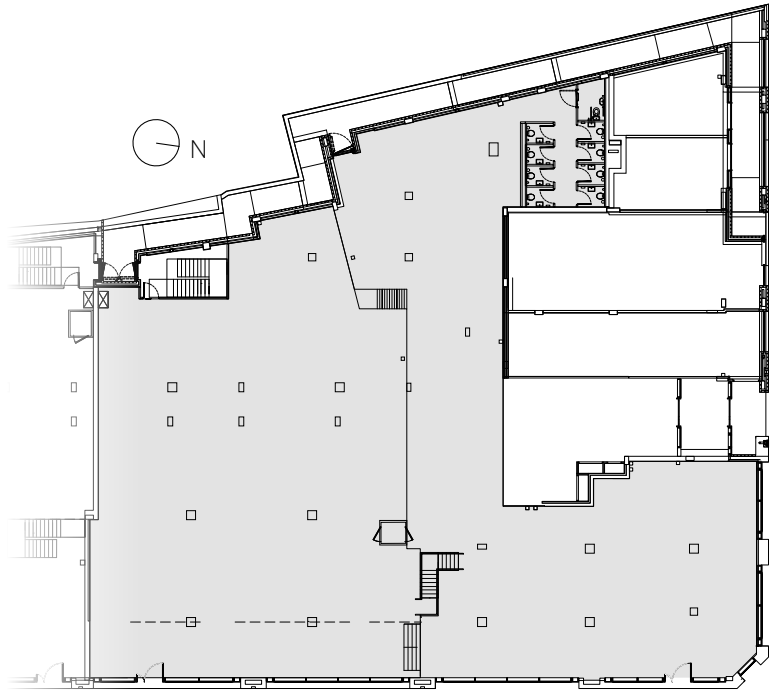
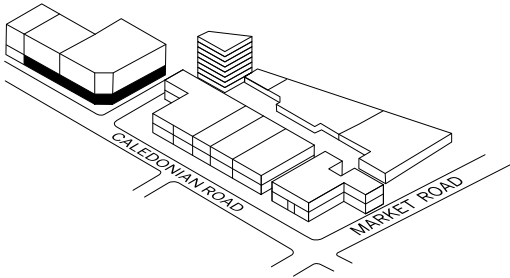
# CALLY YARD

CALEDONIAN  
ROAD N7

## GROUND FLOOR

Unit 1A / Unit 1B

9,684 ft<sup>2</sup> / 900 m<sup>2</sup>



## FIRST FLOOR

Unit 1A / Unit 1B

4,266 ft<sup>2</sup> / 396 m<sup>2</sup>

